

INNOVATION INSPIRED BY YOU.™





ABOUT US

USG Boral Middle East (USGBME) is a Joint venture between USG Corp – USA (USG) and Boral-Australia (BLD. AX) with Saudi Shareholders. Started in Dammam, Saudi Arabia, in 1985, USGBME is a leading manufacturer of Ceiling, Interior Finishing and Drywall Partitions. Our products are supplied to more than 25 countries through 4 regional manufacturing plants and a wide network of sales and technical offices and distributors. Our products ranges are trusted for use in homes, offices, hospitals, schools, universities, cinemas, and retail spaces as well as in many of the world's most iconic projects.

USG Boral Middle East products main categories are:

Acoustical Ceiling Panels: USGBME produce various substrates of acoustical ceiling panels from Mineral Fiber, Metal, Gypsum, Specialty, Soft Fiber and Wood Laminates Ceiling with excellent acoustic & fire rated performance.

Metal: Ceiling Suspension system with DONN® DX Brand is available for various applications (Fire, Seismic). Metal Framing for Drywall partition & Shaftwall system with all metal accessories for Ceiling & Wall partitions like Hangers, Clips, Access Panels. The facility has its own Powder Coating & Slitting Lines to grant to our clients best finishing possible & faster delivery time.

Plasterboards: Drywall Gypsum board with its famous Brand Sheetrock® is available for various applications (Fire Rated, Moisture Resistance, and Mold Resistance) in addition to Fiberock® Brand for Abuse Resistance, Wall board for interior use, and High Performance Securock® Glass-Mat Sheathing Fire Rated, Moisture and Mold Resistant Wallboard for Exterior Envelope.

Interior & Exterior Finishes: USGBME provide a wide range of interior finishes such as Sheetrock® All Purpose Joint Compound & Premium Premix Compounds in Ready-Mixed form, Joint Compound Powder Form, Acoustical Sealant, Gypsum Plaster, Joining Tapes and Tuff-Hide® Primer-Surfacer. Also we provide set of finishing materials for exterior use like Durock® Base Coat & General Purpose Base Coat. All finishing materials are applicable for Treatment, Levelling, Skimming and Finishing of Gypsum and Concrete Walls.

USGBME products, manufactured in its 3 regional facilities in Saudi Arabia, Qatar and Turkey, are in compliance with industry's ASTM/EN standards.



INSPIRING INNOVATION WORLDWIDE.

OVER ONE HUNDRED AND FIFTEEN YEARS OF INSPIRATION.

Our mission is to deliver innovation that helps you work smarter, do more and build better. Architects and construction companies need safer, faster, less costly ways to build. Building owners need better running buildings with lower operating costs. And the need for sustainable construction to address global environmental challenges is growing fast. That's why, throughout USG Boral's combined history, we have continually developed innovative wall and ceiling products and systems for our customers.

DONN[®] ACQUISITION

With DONN[®] Incorporated's ceiling suspension systems onboard, USG Interiors became the only company to offer complete pre-designed, fully integrated ceiling systems.

1980

BORAL FORMED

Founded by David Craig on 4 March as a manufacturer and importer of crude oil, Boral was also part owned by Caltex.

1946

USG'S FIRST PRODUCT

Pyrobar, a gypsum based, fireproof tile was developed.

1903

1916

SHEETROCK[®] DEVELOPED

Invented through the evolution of Sackett Board.

1902

USG FORMED

30 independent companies merged to consolidate resources and form United States Gypsum (USG) Company.

FIBEROCK[®] DEVELOPED

A new gypsum/cellulose product family called Fiberock[®] Brand Panels was created. These high performance panels are resistant to moisture, fire, mold and impact.

1990

2000

NEW PRODUCTS DEVELOPED

Sheetrock[®] Mold Tough[®] Levelrock[®]
Next Generation Gypsum Panels
Geometrix[™] Metal Ceiling Panels
Sheetrock[®] All Purpose Joint Compound
Securock[®] Roof Board
Securock[®] Glass-Mat Sheathing
Securock[®] Glass-Mat Liner Panels

1985

DUROCK[®] DEVELOPED

Suitable for exterior envelopes, areas with high humidity levels or in direct contact with water.

SECUROCK[®] GLASS-MAT DEVELOPED

Quality, high-performance sheathing for warranted protection from the elements.

2010

2015

EASTSKIM AND EASTSET DEVELOPED

A range of compounds created to help solve an existing customer and product gap.

2014

USG BORAL FORMED

Boral's Gypsum Division came together with USG in a 50/50 joint venture. With over 3500 employees, USG Boral is now a leading manufacturer and supplier of plasterboard-based wall, ceiling lining systems, and accessories in Asia, Australasia, and the Middle East.

2018

ENSEMBLE[™] DEVELOPED

The Ensemble[™] acoustical plasterboard ceiling system offers the seamless look of plasterboard with the acoustical properties of a traditional tile-and-grid ceiling.

VALUES

OUR VALUES ARE FUNDAMENTAL IN EVERYTHING WE DO.

SAFETY

At USG Boral, safety is a priority in everything we do. Being safe means zero harm – nobody getting hurt doing business for us or with us. It is the prerequisite to performance. It protects people, making them confident in working for us and with us. It promotes discipline in what we do, because the only way to be safe is to be focused and to do the right things. It means not taking any shortcuts. It promotes individual engagement toward improving whatever we do.

INTEGRITY

When it comes to building, it's more than just working with products that you can trust. It's working with people whom you can trust, too. That's why when you work with USG Boral, you'll soon realize our word is as rock-solid as our products. Being open, honest, respectful and authentic in all our dealings isn't just good business. It's a cornerstone of how we do business.

INNOVATION

USG Boral is built from an extensive history of innovation that includes more than 1,300 patents for industry-leading products. It's this culture of innovation that drives us to constantly strive for new and better ways to serve our customers, while encouraging creativity and flexibility in everything we do.

EXCELLENCE

USG Boral understands that when it comes to your work, you want the best possible results in the most efficient time possible. That is why we remain ambitious and disciplined in our pursuit of the highest standards of quality, efficiency and service. It's a never-ending commitment to learning, improving and striving to be the best at what we do. So customers like you can get the results they need, in the time they need it.

COLLABORATION

Construction involves many parties, from the manufacturing and supply of building materials to the application of those materials on the job. This is why collaboration is critical to improving the way buildings are built. At USG Boral, we work with our partners, stakeholders and other businesses to share best practices and find new ways to improve performance. It's about using the best resources available and engaging the right people to help support our customers and their business. From opening new doors, to being open to new ideas, collaboration is key to ensuring our customers have the best, most innovative products available. For today, tomorrow and well into the future.

PRODUCTS

INNOVATION AND SUPPORT YOU CAN TRUST.

USG Boral's ever-growing portfolio of groundbreaking products and end-to-end solutions is backed by unparalleled quality service. With an extensive distribution and sales network that has been operating for more than 25 years across Asia, Australasia and the Middle East, our dedicated teams provide local expertise and high levels of support in finding the right solutions for your needs.

CEILINGS

With over 50 years of experience, we are a premier acoustic panel and specialty ceilings innovator that also enhances overall aesthetics. Our portfolio includes acoustical, gypsum tile, metal, and specialty ceilings as well as both standard and seismically rated suspension systems.

PLASTERBOARD

Used to make interior walls and ceilings, our plasterboards are the result of over 100 years of scientific experimentation and innovation success. Cleaner, faster and easily handled by fewer workers, we have installed more than 725 million square meters of plasterboards worldwide.

SUBSTRATES

Compared to traditional wet wall solutions, our substrates are lightweight (thereby reducing installation costs and speeds up construction) and versatile - making it ideal for unique building designs as they are able to be curved and applied on different finishes including paint, tile, stone and texture.

METAL FRAMING

Our range of metal components and profiles allows construction of drywalls and ceilings to be done faster, more accurately and cleaner than conventional methods. Also, this innovative framing can be engineered to suit a job site's requirements while achieving global construction standards.

INTERIOR FINISHES

Used for jointing, bonding, skimming and creating textured finishes for building interiors, we boast a broad range of products for compounds with our extensive capabilities to formulate solutions according to your requirements and preferences.



CEILING



MINERAL FIBER ACOUSTICAL CEILING



- Fissured Family
- Face Cut Family
- Laminated Family
- Olympia Family
- Plain Family
- Healthcare Family

SOFT FIBER ACOUSTICAL CEILING



- Glass Wool
- Stone Wool

METAL CEILING



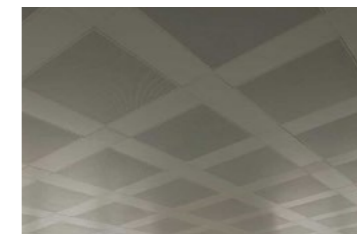
- Lay-In (Plain and Perforated)
- Clip-In (Plain and Perforated)
- Hook-On (Plain and Perforated)
- Lay-On (Plain and Perforated)
- Open Cell

GYPSUM CEILING



- Laminated Family (Perforated and Plain)
- Painted Family

SPECIALTY CEILING



- Canopies (Mineral Fibers, Soft Fibers and Metal)
- Concealed (Mineral Fibers, Soft Fibers and Metal)
- Baffles (Mineral Fibers and Metal)
- Geometrics 3D Ceilings
- Corridor Systems
- Intersecto

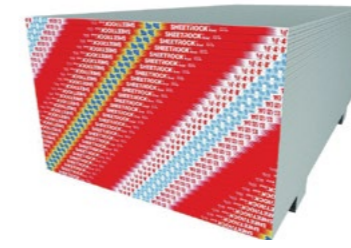
GRID CEILING SUSPENSION SYSTEMS



- DONN® DX®/DXL™ T15 Exposed Grid
- DONN® DX®/DXL™ T24 Exposed Grid
- DONN® Finline Exposed Grid
- DONN® brand IDENTITEE™ DXI™

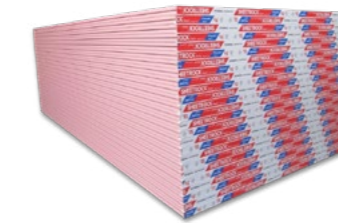
PLASTERBOARD

REGULAR BOARDS



- 12.5 mm USG Boral Regular Core
- 12.7 mm USG Boral Sheetrock® Brand Regular Core
- 15 mm USG Boral Regular Core
- 12.7 mm USG Boral Sheetrock® Brand Mold Tough™ Regular Core
- 12.7 mm USG Boral Sheetrock® Brand Glass-Mat Panels Mold Tough™ Regular Core

FIRE RATED BOARDS



- 12.7 mm USG Boral Sheetrock® Brand Type C
- 15.9 mm USG Boral Sheetrock® Brand Type C
- 15.9 mm USG Boral Sheetrock® Brand Type X
- 15.9 mm USG Boral Sheetrock® Brand Glass-Mat Panels Mold Tough™ Firecode™ Type X
- 12.7 mm USG Boral Sheetrock® Brand Mold Tough™ Type C
- 15.9 mm USG Boral Sheetrock® Brand Mold Tough™ Type C
- 15.9 mm USG Boral Sheetrock® Brand Mold Tough™ Type X
- 12.5 mm USG Boral Fire Stop
- 16 mm USG Boral Fire Stop

MOISTURE RESISTANT / WETSTOP™ BOARDS



- 12.5 mm USG Boral Wetstop™
- 12.7 mm USG Boral Sheetrock® Brand Wetstop™
- 15 mm USG Boral Wetstop™
- 15.9 mm USG Boral Sheetrock® Brand Wetstop™

SHAFTWALL LINER BOARDS



- 25.4 mm USG Boral Sheetrock® Brand Shaftwall Liner
- 25.4 mm USG Boral Sheetrock® Brand Glass-Mat liner Shaftwall
- 25.4 mm USG Boral Sheetrock® Brand Glass-Mat Liner Panels Mold Tough™

ACOUSTICAL BOARDS



- 12.5 mm Ensemble™ Monolithic Acoustical Ceiling
- 12.5 mm USG Boral Acoustic Plasterboard



SUBSTRATES

DUROCK®



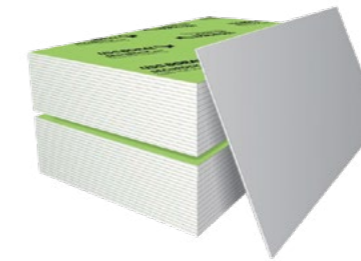
- 12.7 mm USG Durock® Brand Cement Board
- 15.9 mm USG Durock® Brand Cement Board
- 6.4 mm USG Durock® Brand Cement Board Underlayment

FIBEROCK®



- 12.7 mm USG Fiberock® Abuse Resistant
- 15.9 mm USG Fiberock® Abuse Resistant
- 12.7 mm USG Fiberock® Aqua-Tough™ AR Interior Panels
- 15.9 mm USG Fiberock® Aqua-Tough™ AR Interior Panels
- 6.4 mm USG Fiberock® Tile Backerboard and Underlayment
- 9.5 mm USG Fiberock® Tile Backerboard and Underlayment
- 12.7 mm USG Fiberock® Tile Backerboard and Underlayment
- 15.9 mm USG Fiberock® Tile Backerboard and Underlayment

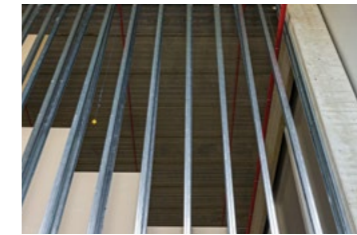
SECUROCK®



- 12.7 mm USG Boral Securock® Brand Glass-Mat Interior
- 12.7 mm USG Boral Securock® Brand Glass-Mat Sheathing
- 12.7 mm USG Boral Securock® Brand Glass-Mat Sheathing Firecode™
- 15.9 mm USG Boral Securock® Brand Glass-Mat Sheathing Firecode™ Type X
- 6.4 mm USG Securock® Brand Gypsum Fiber Roof Board
- 9.5 mm USG Securock® Brand Gypsum Fiber Roof Board
- 12.7 mm USG Securock® Brand Gypsum Fiber Roof Board
- 15.9 mm USG Securock® Brand Gypsum Fiber Roof Board
- 6.4 mm USG Securock® Brand Glass-Mat Roof Board
- 12.7 mm USG Securock® Brand Glass-Mat Roof Board
- 15.9 mm USG Securock® Brand Glass-Mat Roof Board

METAL FRAMING

WALL



- Wall Tracks U Shape
- Curved Track
- Inclined Track
- Deflection Track T & U Shape
- Wall Studs C Shape
- Wall Lining - Furring Channels
- Drywall Metal Accessories Resilient Channel Single Lip
- Flat Strip (Wall Bracing)
- Control Joint
- Deflection Clips
- Drywall Metal Accessories J Trims
- Drywall Metal Accessories L Corners Beads
- Drywall Suspension System Z Channel
- V Brace
- Wafer Head Screw 13
- Screw Self Tapping

CEILING



- Drywall Suspension - Perimeter Channels
- Drywall Suspension - Primary Channels
- Drywall Suspension - Furring Channels
- Drywall Shadow Angles
- Shadowline Stoppage Angle
- Drywall Suspension System Z Channel
- Phonic Hanger U Shape
- Wire Connecting Clip
- Threaded Rod Hangers
- Rod Hangers & Adjustable Butterfly Clips
- Hanger Wire, Suspension Clip & Spiral Hook
- Hanger L Bracket
- Wafer Head Screw 13
- Screw Self Tapping

SHAFTWALL



- Shaftwall Framing Systems - CH Stud
- Shaftwall Framing Systems - J Runner / J Strut
- Shaftwall Framing Systems - E Stud

INTERIOR FINISHES



JOINTING COMPOUNDS, READY MIXED



- Sheetrock® All Purpose Joint Compound
- Premium Premix Joint Compound
- Sheetrock® Dust Control Joint Compound
- Sheetrock® Lightweight All Purpose Joint Compound
- Sheetrock® Base Compound

JOINTING COMPOUNDS, POWDER FORM



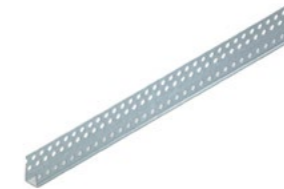
- Sheetrock® Drying Type Powder Joint Compounds
- General Purpose Basecoat
- Durock® Basecoat
- Sheetrock® Brand Durabond® Joint Compound

JOINT TAPES



- Sheetrock® Paper Joint Tape
- Sheetrock™ Brand Flexible Metal Tape On Corners
- Sheetrock® Fiberglass Drywall Tape
- Durock® Brand Interior Tapes
- Durock® Brand Exterior Tapes

CORNER BEADS & TRIM



- USG Boral Drywall J Trims
- USG Boral Drywall L Corners Beads
- USG Boral Shadowline Stoppage Angle
- Beadex® Paper Faced Metal Bead

SPECIALTY PLASTERS



- Diamond® Brand Veneer Finish-Sanded
- USG Acoustical Plaster Finish
- Imperial veneer finish
- Plaster Bonder

PREPARATION & FINISHING SOLUTIONS



- Sheetrock® Brand Tuff Hide™ Primer-Surfacer
- Sheetrock® Brand Acoustical Sealant
- Sheetrock® Brand Ensemble Finish

PROJECTS

COMMERCIAL
BUILDINGS
HI-RISE, MALLS
& RESIDENTIAL

EDUCATIONAL

ENTERTAINMENT
& CINEMAS

GOVERNMENTAL
& INSTITUTIONAL

HEALTHCARE

HOSPITALITY
& HOTELS

MILITARY
& SECURITY

OIL & GAS,
PETROCHEMICAL,
INDUSTRIAL &
POWER PLANTS

TRANSPORTATION
& AIRPORTS

FINANCIAL
& BANKING /
SPORTS

COMMERCIAL BUILDINGS, HI-RISE, MALLS & RESIDENTIAL



Palm Jumeirah, Dubai

BAHRAIN

- Atrium Mall
- Ministry of Housing
- Villa Mar

CYPRUS

- AB Megastores Supermarkets
- Tsakos Shipping Company

GREECE

- AB Vasilopoulos Supermarkets
- ELIN Petrol Stations
- Kafkas Electric Stores
- Kallergis Housing
- Katselis Prefabricated Housing
- Kotsovolos Electronic Stores
- Messini Housing Projects

KINGDOM OF SAUDI ARABIA

- Ajdan Walk
- Al Deewan Tower
- Al Fanar Labour Camp
- Al Rimal Gated Community Project
- Information Technology & Communication Center - ITCC
- Jeddah Tower
- National Guard Housing
- Royal Commission Labor Camp
- STC Headquarter
- Town Center Building
- Waseel Hills - SABIC

KUWAIT

- JADE Tower
- Qurtaba Neighborhood Center

MALTA

- Play Mobil Toy Company

OMAN

- Blue City
- Mall Of Oman
- Omantel Headquarter
- The Wave

QATAR

- Al Manar Mall
- Doha City Center
- Doha Oasis
- Maseed Commercial Center
- Mesheireb downtown Doha
- Scouts Headquarter
- West Bay Complex

TURKEY

- Akkoza Sales Offices
- Bakirkoy Marina Residences
- Cimko Kahramanmaras Offices
- Demir Insaat - Ayisigi Residence
- Doga Evleri
- Doruk Villas
- Eczacibasi Levent Office

- Fatihan Insaat
- Galleria Avm Renovation
- Garanti Akkoza Residences
- Grey Worldwide
- Gul Kent
- IKEA Stores, Bursa
- Inanlar Insaat - Fulya Terrace Residences
- Istiklal Mobilya
- Kentpark Shopping Mall
- Levent Loft Residences 2
- Palmira City
- Polat Holding - Caddebostan Residences
- Sinpas Bosphorus City
- Yenibosna Office Center
- Zara Shops
- Zorlu center

UNITED ARAB EMIRATES

- Abu Dhabi Marina Mall
- Abu Dhabi Trade Center
- Akoya Oxygen, Phase -3
- Al Andalus Buildings
- Al Fattan Down Town
- Al Ghariba Villas
- Al Ghurair Shopping Center
- Al Hadeel Residential Building
- Al MBR Villas
- Al Raha Building RBW3-C4
- Artesia Mid-Rise Building
- ATCT Towers
- Badr Project-Phase 1
- Baniyas Mall
- Bawadi Mall
- Burj Dubai Development
- Burj Khalifa
- Burj Old Town Development
- Burj Vista- Down Town
- Convention Center
- Deira City Center
- DIFC Gate Village 11 development
- Dubai Hill Villas
- Dubai International Financial Center
- Dubai Logistics City
- Dubai World Trade Center-DWTC- Multi-story Car Park
- Dubai Government Villa Oud Al Muteena
- Emerald Residential Complex
- Emirates Aluminum Main Office
- Emirates Towers
- Emiratis Housing Development
- Fairways Vistas PA-02
- Golf Tower
- Harbour Creek
- Huawei Head Office
- Ibn Buttuta Mall
- IPIC Tower
- Jumeirah Lake Tower 1
- JVC Buildings
- Limitless - Downtown Jebel Ali Zone
- Logistic Complex, Dubai South
- Lulu Island
- Mega Mall, Sharjah
- Mirdif Hills Development
- Mixed Use Building at Maonkool AW Rostamani
- Montrose Tower
- Motor City
- Nation Towers
- Nestle Middle East Building
- Opera Tower
- Oud Al Muteena Villas Project
- Palm Jumeirah, 400 villas
- Parson Headquarter
- Post Office Tower
- Presidential Flight
- Ras Al Khaimah Headquarters
- RP Global- Business Bay
- Ruwais Housing Complex Expansion Phase IV - 663 Villas
- Sahara Center
- Springs Village Retail Expansion
- The Address Residence Fountain View
- Uninest Accommodation
- Water Edge (YAS-IB)
- World Trade Center Residence

EDUCATIONAL



American University of Sharjah, Sharjah

BAHRAIN

- Athena School
- American University of Bahrain

CYPRUS

- Near East University

KINGDOM OF SAUDI ARABIA

- Al Imam University-Extension
- Al Suwaiket Schools
- Dar Jana Schools
- Enrichment School
- International Programs School-IPS
- Islamic University
- KAUST Innovation Center-Thuwal
- KAUST Renovation
- King Abdulaziz University - KAAU
- King Abdullah University of Science and Technology-KAUST
- King Fahd University of Petroleum and Minerals-KFUPM - R&D Building
- King Saud University
- MSI Institute
- Najran University
- Prince Noura University - PNU
- Royal Commission Schools
- Royal Commission Schools - C070
- Taif University
- Thuwal Town Development - Schools

LEBANON

- American University of Beirut - AUB
- Lebanese University-Hadath & Tripoli

OMAN

- Sultan Qaboos University

TURKEY

- Bilgi University
- Dogu Akdeniz Dormitory
- Fetih College
- Hamit Sutmen Primary School
- Hizir Reis Primary School
- Ismet Aktan Primary School
- Mediha Tansel Primary School
- Sanko Schools
- Yeni Nesil 2000 College

UNITED ARAB EMIRATES

- Abu Dhabi University
- American University of Sharjah - AUS
- Future School
- Gems School
- Knowledge Village
- Science Park
- Signature Private Co-Education School
- Zayed University

ENTERTAINMENT & CINEMAS



BAHRAIN

- Bahrain City Center Cinemas
- Bahrain Mall
- Cineco Cinemas, Oasis Mall
- Cinepolis Cinemas, Atrium Mall
- Dana Mall
- Five Guys, Avenue Mall
- Vox Cinemas, The Avenues

JORDAN

- Taj Mall Cinemas

KINGDOM OF SAUDI ARABIA

- Vox Cinema, Al Qasr Mall
- Vox Cinema, Kingdom Tower
- Vox Cinema, Red Sea Mall
- Vox Cinema, Riyadh Park
- Vox Cinema, Roof Mall

KUWAIT

- Vox Cinema, The Avenues Mall

OMAN

- Avenue Mall Cinema
- Cinepolis Cinema
- Cinepolis Sohar
- Muscat Grand Mall Cinemas

QATAR

- Doha City Center Cinemas
- Land Mark Mall
- Mesheireb Cinemas
- Pearl Qatar Grand Cinemas
- Qatar Mall Cinema
- Tawar Mall Cinema

UNITED ARAB EMIRATES

- Abu Dhabi Marina Mall
- Abu Dhabi Trade Center
- Al Ghurair Shopping Center
- Al Jimi Mall
- Burjuman Center
- Burjuman Cinema-Expansion
- City walk
- Dubai Arena
- Dubai Festival City & Extension Cinemas
- Dubai Mall Cinemas
- Dubai Mall Extension
- Dubai Marina Mall Cinemas
- Dubai South Mall
- Fujairah Cinema
- Jumeirah Retail Development
- Khalidiya Mall Cinemas
- Mega Mall, Sharjah
- Mercato Mall
- Mirdif City Center Cinema
- Mirdif City Center Cinema-Expansion

- Sahara Center
- Sega Orbi Entertainment Center
- Uber Cinema
- Vox Cinemas, Al Hamra Mall
- Vox Cinemas, Fujairah City Center
- Warner Brothers Theme Park

GOVERNMENTAL & INSTITUTIONAL



King Abdullah Petroleum Studies and Research Center - KAPSARC, Riyadh

BAHRAIN

- Deputy Prime Minister Office

GHANA

- Saudi Embassy, Accra

JORDAN

- Customs Head Office, Aqaba

KINGDOM OF SAUDI ARABIA

- American Consulate
- KAP Projects
- King Abdullah Petroleum Studies and Research Center - KAPSARC
- King Salman International Convention Center
- Ministry of Environment, Water and Agriculture
- Ministry of Justice, Courts
- Ministry of National Guard Mix Projects
- Ministry Of Social Affairs Mix Projects
- Ministry of Water & Electricity Headquarter
- National Guard
- National Guard Housing
- Royal Commission Yanbu Head Quarter
- Technical Institute of Naval Studies

KUWAIT

- Hawala Courts Complex

OMAN

- Oman Botanic Garden
- Public Authority For Social Insurance-PASI

QATAR

- Breeding Farm
- Heart of Doha - Phase 1A
- National Museum of Qatar
- National Museum of Qatar-NMOQ

UNITED ARAB EMIRATES

- Abu Dhabi Fund for Development Headquarters
- Abu Dhabi International Authority
- Abu Dhabi Police General Headquarters
- Abu Dhabi Presidential Palace
- Adnoc Housing Complex
- Al Barsha Police Station
- Dewa Solar Innovation Center
- DM- Financial Audit Authority Building
- Dubai Airwing Facilities
- Dubai Electricity & Water Authority-DEWA, Al Quoz
- Dubai Municipality Building
- Expo 2020-E21 Operational & Community Building
- Jebel Ali Free Zone Authority-JAFZA Convention Center
- Ministry of Foreign Affairs
- Mohammed Bin Rashid-MBR Library
- Telecom Regulatory Authority-TRA
- Telecommunications Regulatory Authority-TRA, Al Mamzar
- Zabeel Feed Mill

HEALTHCARE



Awali Hospital, Awali

BAHRAIN

- Awali Hospital
- BDF Polyclinic
- King Hamad University Hospital

EGYPT

- Dar Al Fouad Hospital

GREECE

- Bioiatriki Medical Center

JORDAN

- Al-Kindi Hospital

KINGDOM OF SAUDI ARABIA

- Al Dara Hospital
- Al Salam Hospital
- Dallah Hospital Extension
- Dammam General Hospital-ER Expansion
- Dr. Sulaiman Al Habib Hospital
- Fajar Al Dammam Medical Complex
- King Faisal Specialist Hospital and Research Center -KFSH&RC Mega Expansion
- Royal Commission General Hospital
- Saad Specialist Hospital
- Sinopec Research Center
- Specialized Medical Center-SMC
- Tabuk Hospital
- Um Al Qura University Teaching Hospital

KUWAIT

- Al-Amiri Hospital Expansion
- Farwaniya Hospital

LEBANON

- American University of Beirut Medical Center-AUBMC
- Rafic Hariri Hospital

OMAN

- Sultan Qaboos University Hospital

TURKEY

- Acibadem Adana Hospital
- Acibadem Atasehir Hospital
- Acibadem Hospital
- Dia Bilkent Health Center
- Kalyon Lutfi Kirdar Health Complex
- Medical Park Hospital
- Medicana Hospital Managerial Offices
- Turkerler Etlik Integrated Health Campus
- Umraniye Maternity Hospital

UNITED ARAB EMIRATES

- Al Mafraq Dialysis Center
- Al Maktoum Hospital Redevelopment
- Al Qassimi Hospital
- Cleveland Clinic
- Emirates Hospital

- Gargash Hospital
- Issaq Medical Center
- Mediclinic City Hospital
- Mediclinic Parkview Hospital
- National Rehabilitation Center
- Wagan Hospital

HOSPITALITY & HOTELS



Hilton Dead Sea & Spa Resort, Dead Sea

BAHRAIN

- Movenpick Hotel Refurbishment

CYPRUS

- Acapulco Hotel
- Aphrodite Hotel
- Crowne Plaza Hotel

JORDAN

- Hilton Dead Sea & Spa Resort

KINGDOM OF SAUDI ARABIA

- Crowne Plaza Hotel
- Holiday Inn Hotel
- Jabal Omar

OMAN

- Beach Hotel
- Khasab Hotel

QATAR

- Intercontinental Hotel
- Ritz Carlton Hotel
- Woldorf Astoria

TURKEY

- Aktay Insaat- Ela Quality Resort Hotel
- Bilgili West Blocks
- Blox Halic
- Calista Luxury Resort Hotel
- Gocay Insaat - Hilton Dalaman Golf Resort & Spa
- Hilton Hotel, Dalaman
- Marriott Hotel
- Marriott Hotel, Absheron Peninsula
- Tugcan Hotel
- Zumrut Hotel

UNITED ARAB EMIRATES

- Al Forsans Hotel
- Atlantis Hotel, Palm Jumeirah
- Azizi Plaza Hotel Apartments
- Bluewater Hospitality
- Bridgeway Hotel
- Burj Dubai-Business Park
- Burj Dubai-Lake Hotel
- CityMax Hotel, Business Bay
- Emirates Palace Hotel
- Hotel & Hotel Apartments
- Ibis Hotel-Dubai
- InterContinental Fujairah Resort
- Madinat Jumeirah
- Novotel Hotel (Al Barsha & Fujairah)
- Park Palace
- Taj Exotica
- Tecom Hotel & Apartment Tower
- Tiara Hotel
- Viceroy's hotel

MILITARY & SECURITY



King Khalid Air Base-KKAB | Khamis Mushait

AFGHANISTAN

- Australian Defense Force

BAHRAIN

- Sheikh Isa Airbase

CYPRUS

- British Military Base Paphos

KINGDOM OF SAUDI ARABIA

- Dirab Air Base
- F-15 Fleet Modernization Program Facilities
- Islamic Military Counter Terrorism Coalition-IMCTC
- King Khalid Air Base-KKAB
- Military Geophysical Institute
- Military Industries Corporation
- Military Music Institute
- Naval Port
- Saudi Arabian National Guard-SANG-Wakala Building
- Saudi National Guard

KUWAIT

- Ali Al Salem Air Base

OMAN

- Royal Oman Police

TURKEY

- F 35 Jet Military Base

UNITED ARAB EMIRATES

- UAE Presidential Guard Command - Mahwi Camp

OIL & GAS PETROCHEMICAL, INDUSTRIAL & POWER PLANTS



Kuwait National Petroleum Company-KNPC, Kuwait

BAHRAIN

- Bahrain National Gas-Banagas Lab Extension

KINGDOM OF SAUDI ARABIA

- Juaymah Shops Upgrade, Saudi Aramco
- Berri Gas Plant Offices, Saudi Aramco
- Fadhili Gas Plant, Jubail
- Farabi Petrochemicals Headquarters
- Haradh Gas Plant, Saudi Aramco
- Jeddah Power Plant
- Jizan Refinery, Saudi Aramco
- New Jet Propulsion Center
- Petro Rabigh II MFT Buildings
- Petro Rabigh Phase II, NPB Project
- Saudi Electricity Company-SEC-Substations
- Saudi Kayan Offices
- Sharq Project, Jubail
- Shoaiba power and desalination plant

KUWAIT

- Al Zour Refinery
- Kuwait Gulf Oil Company-KGOC
- Kuwait National Petroleum Company-KNPC
- Lower Fars Heavy Oil Development Program - LFHO
- Renewable Energy Power Park

OMAN

- Sohar Refinery

TURKEY

- Saritas Plant

UNITED ARAB EMIRATES

- Abu Dhabi Gas Industries Ltd (GASCO)
- Barakah Nuclear Power Plant
- District Cooling Plant-Deira Islands Night Souk
- DOSA Light Industrial Unit - Phase 06
- Emirates Nuclear Energy Corporation

TRANSPORTATION & AIRPORTS



Riyadh Metro & King Abdullah Financial District (KAFD)

GREECE

- National PATRA - IOANNINA Road Tolls Booths

KINGDOM OF SAUDI ARABIA

- Abha Airport
- Al Haramain Railway-OCC Building
- King Abdulaziz International Airport-KAIA
- King Khaled Airport-New Administration Building
- Riyadh Metro

OMAN

- Muscat Airport

QATAR

- New Doha International Airport-NDIA

TURKEY

- Ashqabad Airport
- Dalaman Airport
- Turkish Airlines - New Airport

UNITED ARAB EMIRATES

- Abu Dhabi Airport
- Dubai Airport Terminal 3-Concourse 4
- Dubai International Airport Terminal I & II
- Dubai International Airport Terminal III-Concourse
- Dubai International Airport Terminal III-Extension
- Dubai Metro
- Khalifa Port Terminal P-2

FINANCIAL & BANKING / SPORTS



Al Wakrah Stadium, Al Wakrah

FINANCIAL & BANKING

KINGDOM OF SAUDI ARABIA

- King Abdullah Financial District - KAFD
- Saudi Arabian Monetary Authority Headquarter - SAMA
- Tadawul Tower

MALTA

- BOV Banks
- HSBC Bank

TURKEY

- Bank Asya Headquarters

UNITED ARAB EMIRATES

- Abu Dhabi Financial Center
- First Gulf Bank

SPORTS

KINGDOM OF SAUDI ARABIA

- King Abdullah Sport City

QATAR

- Al Bayt Stadium
- Al Rayan Stadium
- Al Wakrah Stadium

TURKEY

- Ashqabad Olympiad Complex



INNOVATION CENTERS OF EXCELLENCE

Behind every build is a place dedicated to innovation staffed by leading experts in the fields of material science, engineering (chemical, mechanical and civil), chemistry (physical, inorganic and analytical), and architecture. It's their expertise and commitment to the most stringent manufacturing processes at our Research and Development Centre as well as Products and Systems Testing Center in Libertyville USA, Thailand and Australia that enables us to customize our products and solutions according to your market needs and regulations, whilst setting the standard for industry innovation.

SMART INNOVATION FIRST

With more than 1300 patents for industry-leading products, USG Boral has, throughout our history, built a legacy of innovation. But what drives us to constantly strive to deliver ground-breaking first in building materials innovations? To make our customers and partners feel that it's the first time a building manufacturer had their back.

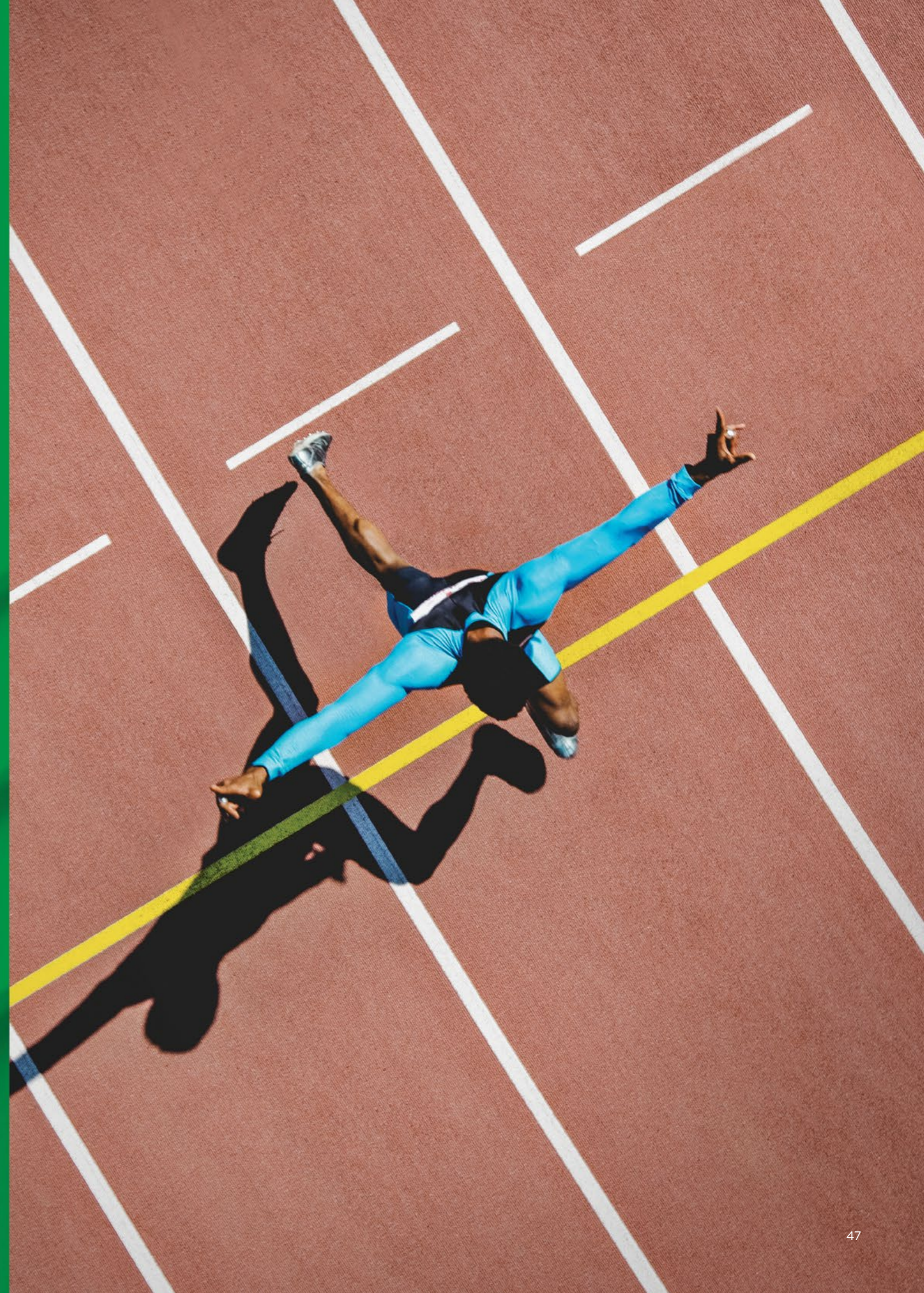
THE FIRST PLASTERBOARD

THE FIRST MINERAL FIBER CAST ACOUSTICAL CEILING TILE

THE FIRST FIRE-RESISTANT PLASTERBOARD

THE FIRST PLASTERBOARD WITH SAG-DEFYING STRENGTH™

AND MORE...



Australia
China
India
Indonesia
Malaysia
Middle East
New Zealand
Thailand
Philippines
Singapore
South Korea
Vietnam

**7410 (Wasil), Street #23, Cross 76, 2nd Industrial City
Dammam 34326-4201, Kingdom of Saudi Arabia**

+966 13 812 0095 info@usgme.com